

Leinwand:

Operafolie, schleuderbar
B 7'700 x H 5'250mm

Reservezug:

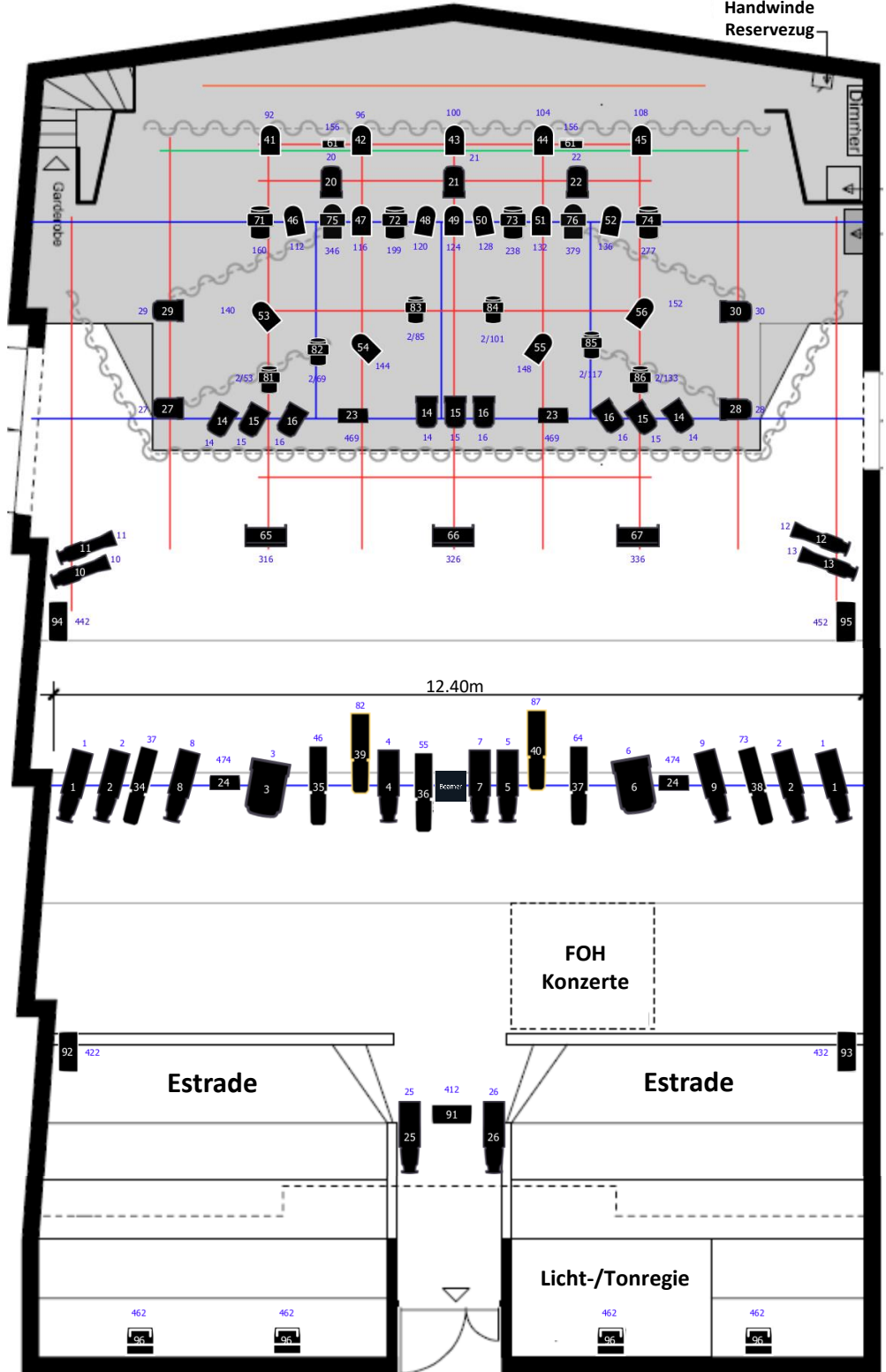
Ø48.3mm

Deckenraster fix:

60 x 60mm

Ø48.3mm

Handwinde
Reservezug

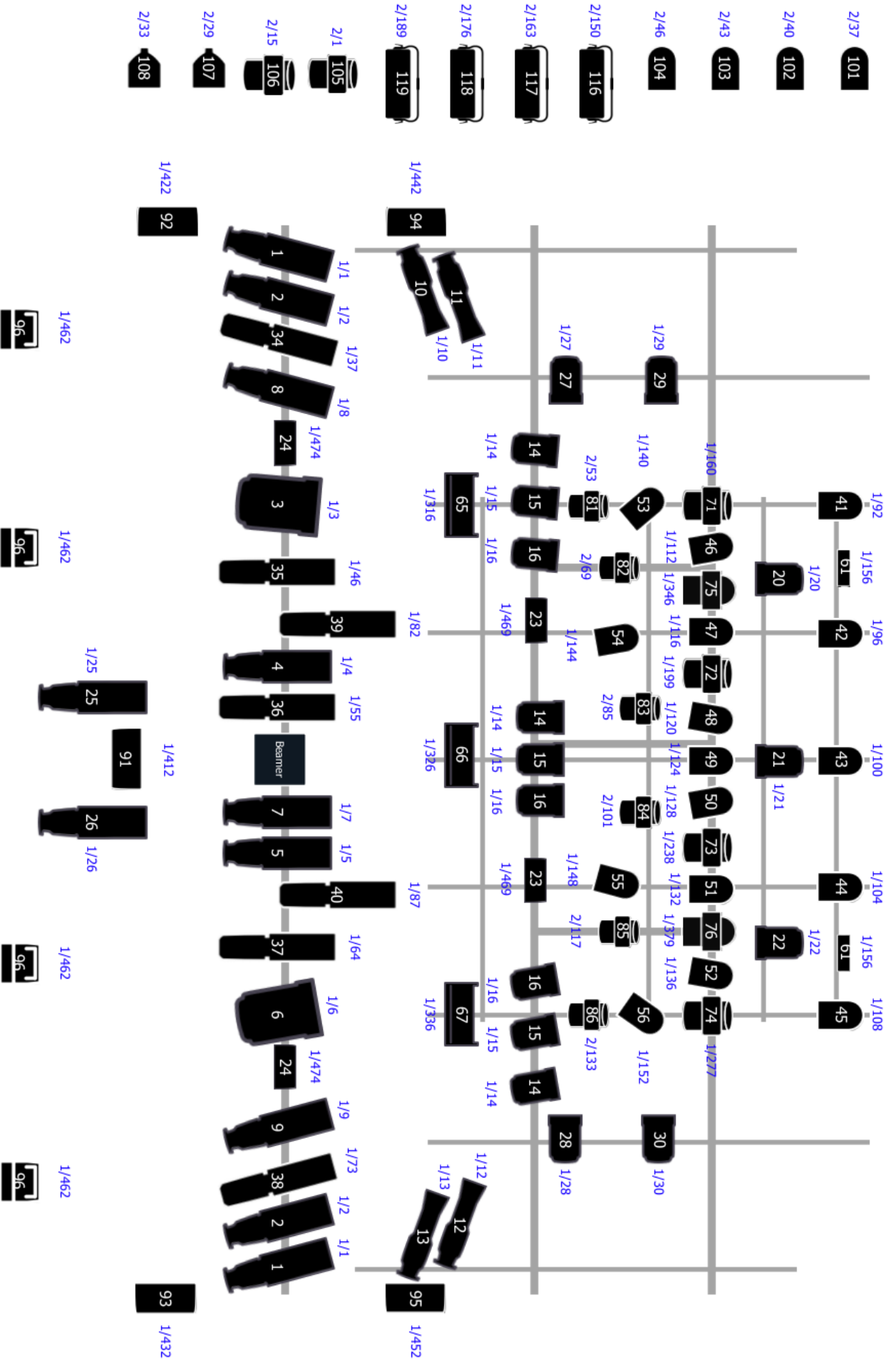


Weisse Zahl = Kreis-Nr. ETC Element
Blaue Zahl = DMX-Adresse

Scheinwerfer-Typ nach Kreis-Nummer:

- 2/25 = Strand Optique 15/42 Zoom-Profil (1200W)
- 4/5/7/8/9 = ETC Source 4 Zoom 15°-30° Zoom-Profil (750W HPL)
- 3/6 = Selecon Arena 7°-60° Fresnel (2000W)
- 1/26 = Strand Cantata 18/32 Zoom-Profil (1200W)
- 10-13 = Selecon Acclaim 18/34 Axial Zoom-Profil (600W)
- 14/15/16 = Strand Quartet PC (650W, mit Torblenden)
- 20/21/22 = Strand Cantata PC (1200W, mit Torblenden)
- 23 = CLF SoftLED 100 VV
- 24 = CLF SoftLED 200 VV
- 27/28 = ETC Source 4 Fresnel 20°-65° (750W HPL)
- 29/30 = DTS Scena 650/1000 MK2 FR Fresnel (650W)
- 34-38 = Prolights ECL Profile CT+ 15-30° (Std RGB 9ch)
- 39/40 = Prolights ECL Profile FS 25-50° (5RGBL)
- 41-56 = Expolite TourLED 42 CM PC MKII, 16° (AR1.d)
- 61 = Stairville Power Strobe 1500W DMX

- 65-67 = Showtec Sunstrip Active DMX
- 71-74 = JB-Lighting P9 Beamspot HP (M2 39ch)
- 75/76 = Robe Spider (18x 30W, 1x 60W RGBW LED 4°-48°) (M3 33ch)
- 81-86 = GLP Impression FR1
- 91-95 = Prolights Arena COB 4 Halo (EXT 10ch)
- 96 = Dimmer, Wandlicht Estrade
- 101-104 = Expolite TourLED 42 CM PC MKII, 16° (AR1.d)
- 105/106 = Stairville MH-X50+ LED Spot Moving Head 50W (14ch)
- 107/108 = American DJ Quad Phase HP LED-Moonflower
- 116-119 = Ignition Co9 V2 LED Flood RGBW (13ch)
- 63 = Smoke Factory Tour Hazer 2 (DMX 158)
- 68 = Stairville M-Fog 1000 DMX Rauchmaschine (DMX 466)



Smoke Factory Tour Hazer 2: DMX 1/158
 Starville M-Fog 1000 DMX Fog Machine: DMX 1/466

Weisse Zahl = Kreis-Nr. ETC Element
 Blaue Zahl = DMX-Adresse